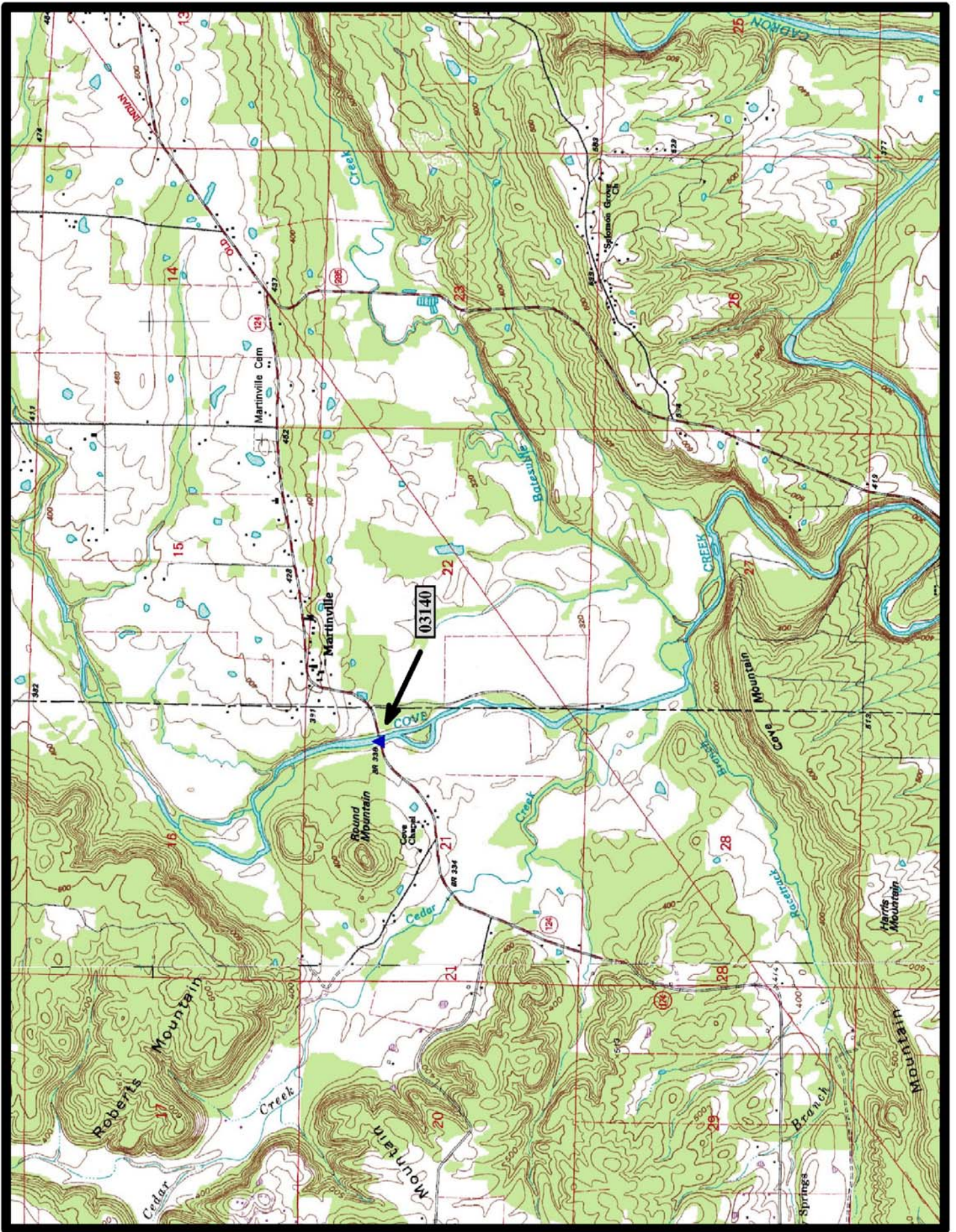


- ▲ In-Service Pratt Thru Truss (10)
- Demolished NR Pratt Thru Truss (5)
- Preserved Pratt Thru Truss (13)

Pratt Thru Truss Bridges



HISTORIC BRIDGE #03140
STATE HIGHWAY 124
CONWAY COUNTY
PRATT THRU TRUSS
CROSSES - COVE CREEK
DATE OF CONSTRUCTION – 1957
BUILDER - FORSGREN BROTHERS, FORT SMITH, AR
HISTORIC BRIDGE INVENTORY DATE - 2005
SHPO NUMBER – CN0320
HAER NUMBER -
DATE LISTED ON NATIONAL REGISTER - 5/24/2004
LAT./LONG. 35:19:16.82, -92:29:07.89

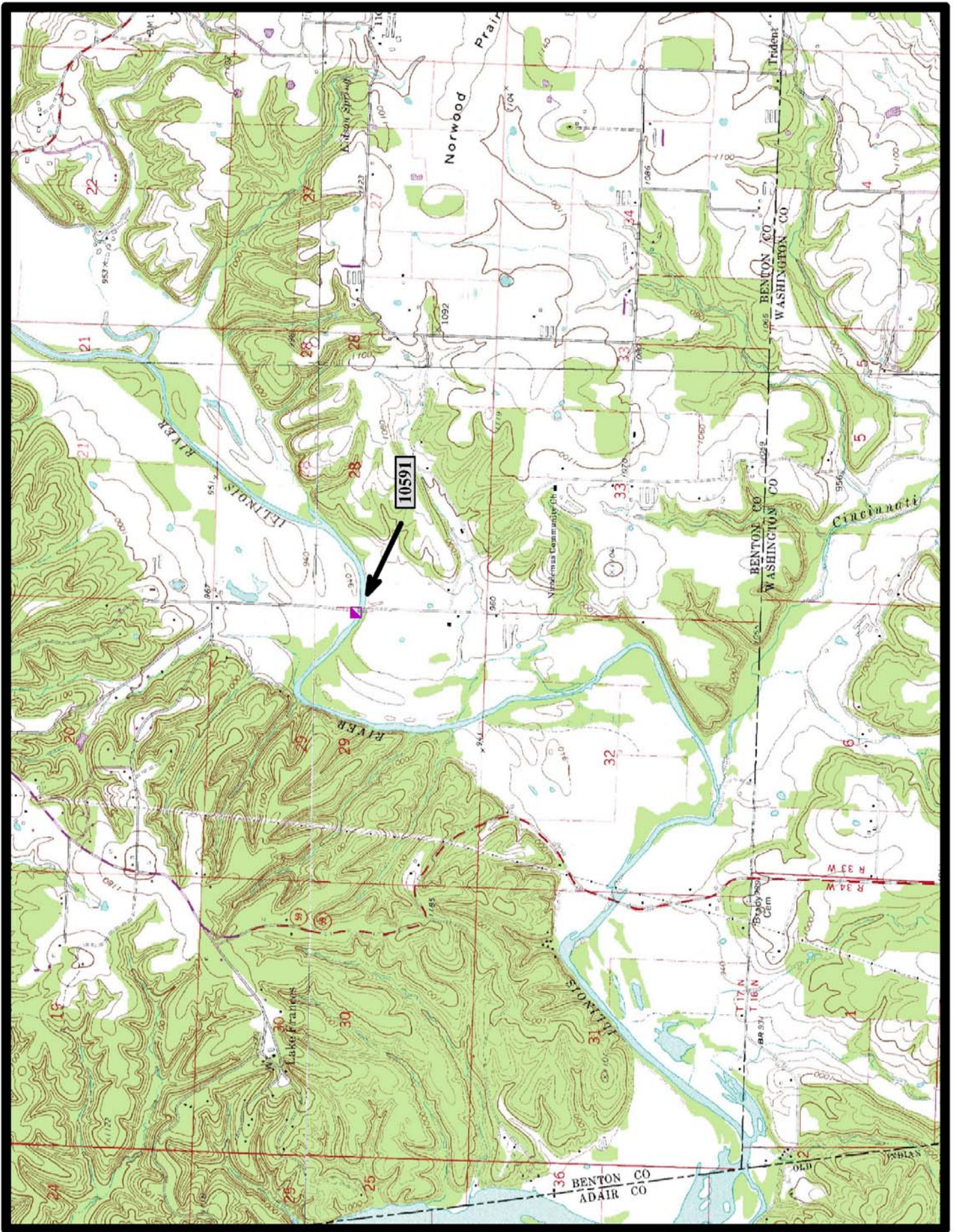


North

Damascus 7.5 min. Quad



PRESERVED HISTORIC BRIDGE #10591
ABANDONED OVER ILLINOIS RIVER
BENTON COUNTY
PRATT THRU TRUSS
CROSSES - ILLINOIS RIVER
DATE OF CONSTRUCTION – 1903
BUILDER - LEAVENWORTH BRIDGE COMPANY, LEAVENWORTH, KS
HISTORIC BRIDGE INVENTORY DATE - 2010
SHPO NUMBER –
HAER NUMBER -
DATE LISTED ON NATIONAL REGISTER -
LAT./LONG. 36:07:22.01, -94:30:57.64

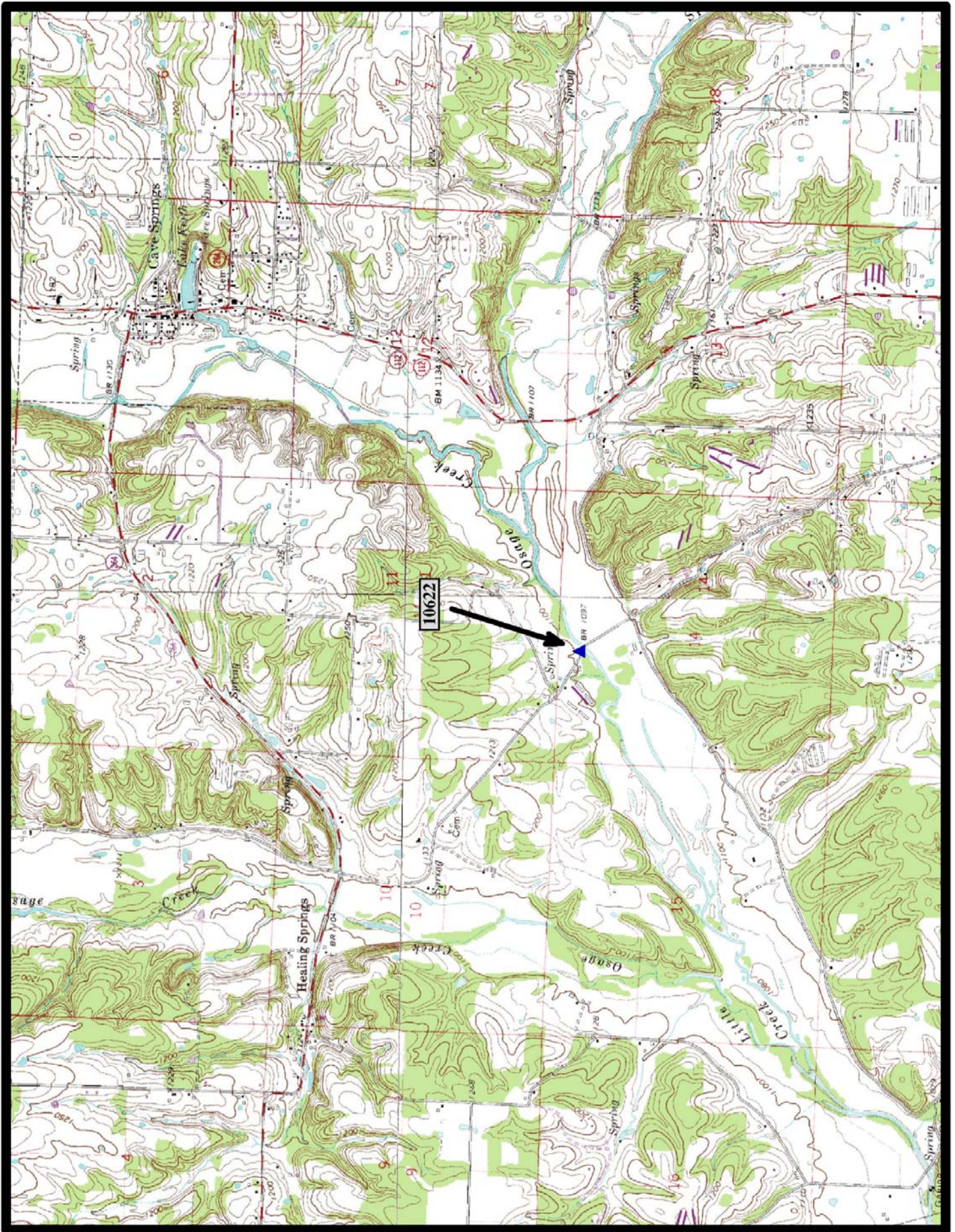


↑
North

Watts 7.5 min. Quad



HISTORIC BRIDGE #10622
COUNTY ROAD 71
BENTON COUNTY
PRATT THRU TRUSS
CROSSES - OSAGE CREEK
DATE OF CONSTRUCTION - 1911
BUILDER - MISSOURI VALLEY BRIDGE & IRON COMPANY,
LEAVENWORTH, KS
HISTORIC BRIDGE INVENTORY DATE - 1987
SHPO NUMBER - BE3034
HAER NUMBER - AR-30
DATE LISTED ON NATIONAL REGISTER - 1/28/1988
LAT./LONG. 36:14:26.67, -94:15:12.51

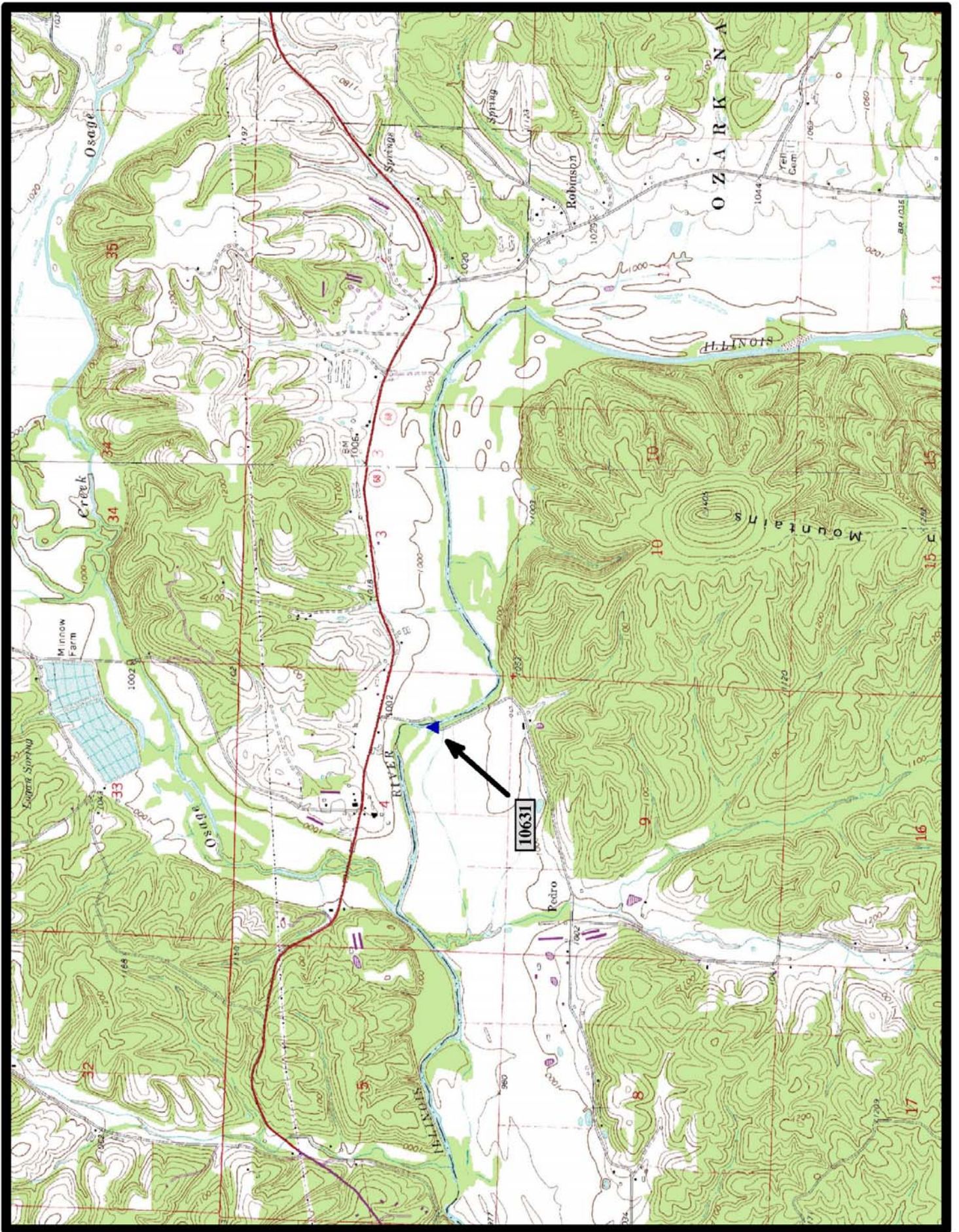


←
North

Robinson 7.5 min. Quad



HISTORIC BRIDGE #10631
COUNTY ROAD 196
BENTON COUNTY
PRATT THRU TRUSS
CROSSES - ILLINOIS RIVER
DATE OF CONSTRUCTION - 1917
BUILDER - POPE CONSTRUCTION COMPANY, JEFFERSON CITY, MO
(DESIGNED BY MISSOURI VALLEY BRIDGE & IRON COMPANY,
LEAVENWORTH, KS)
HISTORIC BRIDGE INVENTORY DATE - 2005
SHPO NUMBER - BE3600
HAER NUMBER -
DATE LISTED ON NATIONAL REGISTER - 1/19/2005
LAT./LONG. 36:10:32.62, -94:23:30.95



↑
North

Gallatin 7.5 min. Quad